

Manual Nespresso machine



1



2



3

The Hendrick's Hotel has different kinds of Nespresso machines in the rooms.
Please follow the steps for a nice cup of coffee.

You can power on machine 2 by pressing the on switch at the back. The other machines will power on automatically when you open the lid, or if you press the button for the size of the coffee.

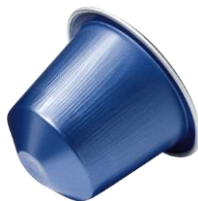
Please note that machine only works when the key is in the slot for the lights.

1. Please fill the container at the back with cold tap water.
2. Open the lid at the top of the machine.
3. Choose a capsule and insert it in the machine.
4. Close the lid.
5. Choose the size of the cup of coffee.
6. Enjoy your cup of coffee.

Espresso



Decafé



Lungo (Normal coffee)

